

RNP APPROACHES AT CDG AIRPORT WITH VERTICAL GUIDANCE

RNP approaches for the South runways published in 2016 :

- All minima available
- First SBAS CATI published

RNP APCH AT CDG



APPROCHE AUX INSTRUMENTS

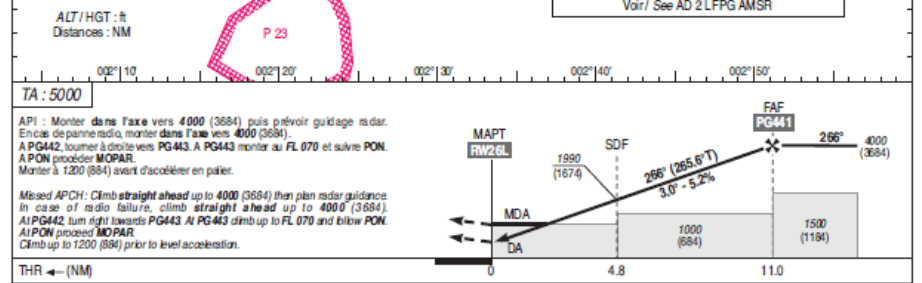
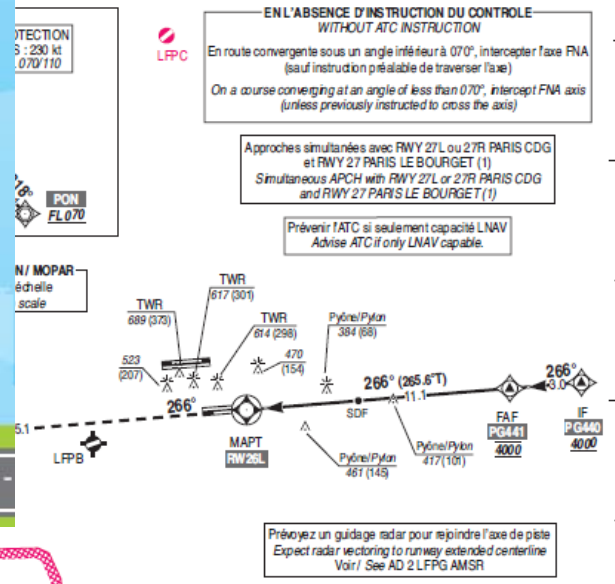
PARIS CHARLES DE GAULLE

Instrument approach
CAT A B C D
ALT AD : 392, THR : 316 (12 hPa)

FNA RNAV (GNSS) RWY 26L

FREQ : Voir / See AD 2 LFPG IAC COM 01		RNP APCH	EGNOS CH 61919 E 26 A RDH : 57	VAR 1°W (10)
--	--	----------	---	--------------------

TMM Baro-VNAV : -20°C. Procédure LNAV NON autorisée pendant les opérations simultanées. Utilisation du FDO de l'AP fournissant un guidage de trajectoire RNAV requis durant les opérations simultanées. Fonction du FMS permettant d'intercepter l'axe de la piste suite à un guidage radar. LNAV procedures NOT authorized during simultaneous operations. Use of FD or AP providing RNAV track guidance required during simultaneous operations. FMS radar vectoring.



CAT	LPV		LNAV-VNAV		LNAV		MVL / Circling (2) 26L → 26R		DIST RWY26L								
	DA (H)	RVR	DA (H)	RVR	MDA (H)	RVR	MDA (H)	VIS	NM	11	10	9	8	7			
C	520 (200)	550	141 152	650 (330) 650 (340)	800 800	325 332	740 (420) 750 (440)	1200 1300	418 432	920 (600) 920 (600)	3000 3000	3876 (3560)	3558 (3242)	3240 (2924)	2921 (2605)	2603 (2287)	
D			178 188	660 (340) 670 (350)	800 800	339 346	770 (460) 790 (470)	1400 1500	451 467	1020 (700) 1070 (750)	3500 4000	2284 (1968)	1966 (1650)	1647 (1331)	1531 (1194)	1213 (876)	894 (557)

Observations / Remarks: (1) Mouvements simultanés : voir consignes ADC 06 / Simultaneous movements : see instructions ADC 06.
(2) MVL : voir consignes ADC 07 / Circling : see instructions ADC 07.
Panne de guidage GNSS durant l'approche / Loss of GNSS guidance during approach : voir en AER 1.5.

FAF - THR	11.0 NM	70 kt	85 kt	100 kt	130 kt	160 kt	185 kt
VSP (ft/min)		370	450	530	610	690	980



RNP APPROACHES AT CDG AIRPORT WITH VERTICAL GUIDANCE

Demonstration of the triple independant parallel operations in CDG, with one RNP APCH with vertical guidance and conventional approaches

- Operational benefits : in case of ILS maintenance, or failure, the accessibility is maintained

RNP approaches for the North runways planned in 2018